

# Kornblumenblau à5

Canto

Alto I

Alto II

Tenor

Basso

11

22

33

43

Measures 43-50 of the musical score. The system consists of five staves. The first staff is a treble clef with a key signature of one sharp (F#). The second staff is a treble clef with a key signature of one sharp (F#). The third staff is a treble clef with a key signature of one sharp (F#). The fourth staff is a treble clef with a key signature of one sharp (F#). The fifth staff is a bass clef with a key signature of one sharp (F#). The music features various note values, rests, and accidentals, including a sharp sign in measure 48.

51

Measures 51-59 of the musical score. The system consists of five staves. The first staff is a treble clef with a key signature of one sharp (F#). The second staff is a treble clef with a key signature of one sharp (F#). The third staff is a treble clef with a key signature of one sharp (F#). The fourth staff is a treble clef with a key signature of one sharp (F#). The fifth staff is a bass clef with a key signature of one sharp (F#). The music features various note values, rests, and accidentals, including a sharp sign in measure 54.

60

Measures 60-68 of the musical score. The system consists of five staves. The first staff is a treble clef with a key signature of one sharp (F#). The second staff is a treble clef with a key signature of one sharp (F#). The third staff is a treble clef with a key signature of one sharp (F#). The fourth staff is a treble clef with a key signature of one sharp (F#). The fifth staff is a bass clef with a key signature of one sharp (F#). The music features various note values, rests, and accidentals, including a sharp sign in measure 64.

69

Measures 69-76 of the musical score. The system consists of five staves. The first staff is a treble clef with a key signature of one sharp (F#). The second staff is a treble clef with a key signature of one sharp (F#). The third staff is a treble clef with a key signature of one sharp (F#). The fourth staff is a treble clef with a key signature of one sharp (F#). The fifth staff is a bass clef with a key signature of one sharp (F#). The music features various note values, rests, and accidentals, including a sharp sign in measure 72.

# Kornblumenblau à5

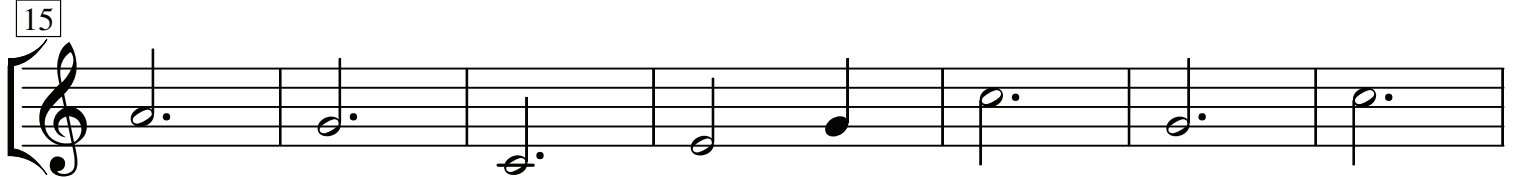
# Canto



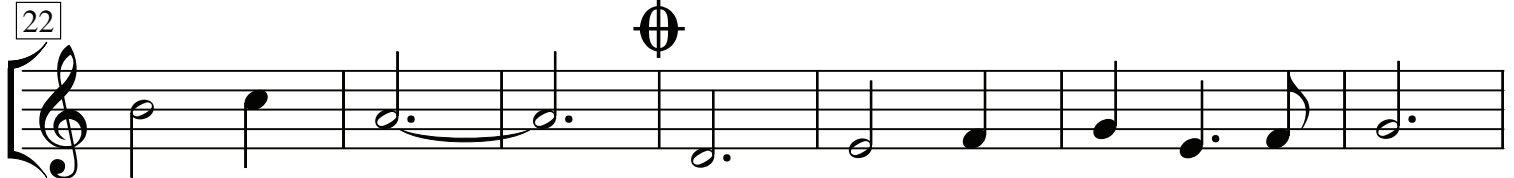
7



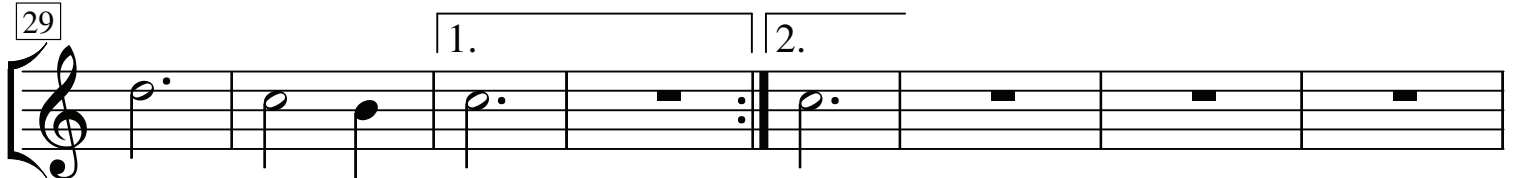
15



22



29



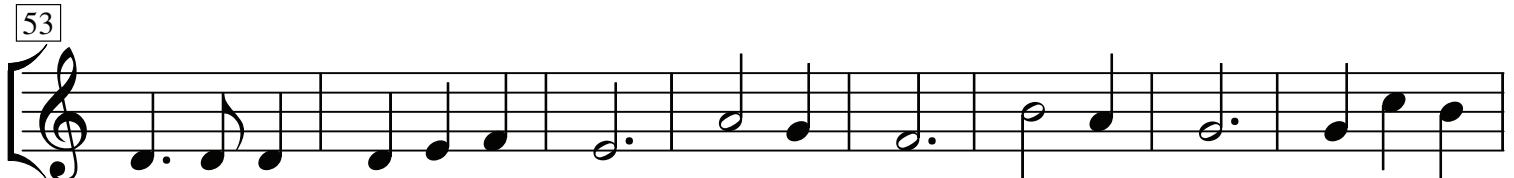
37



45



53



61

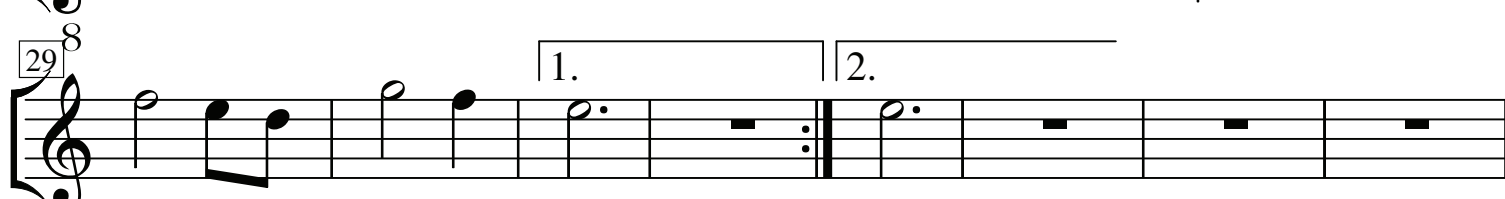
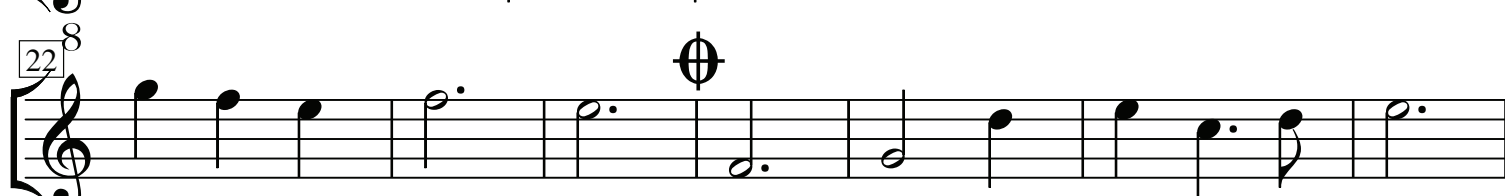
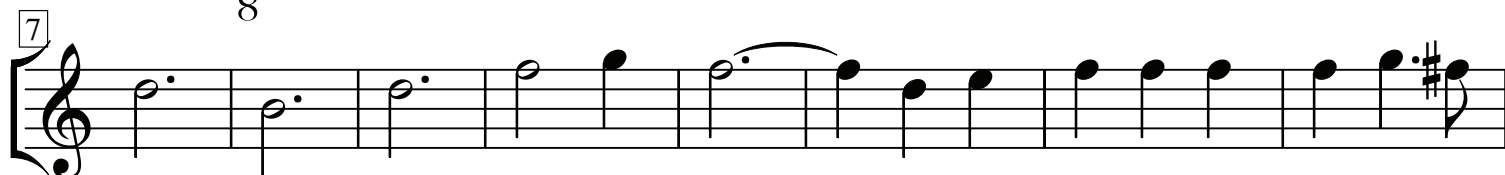


69



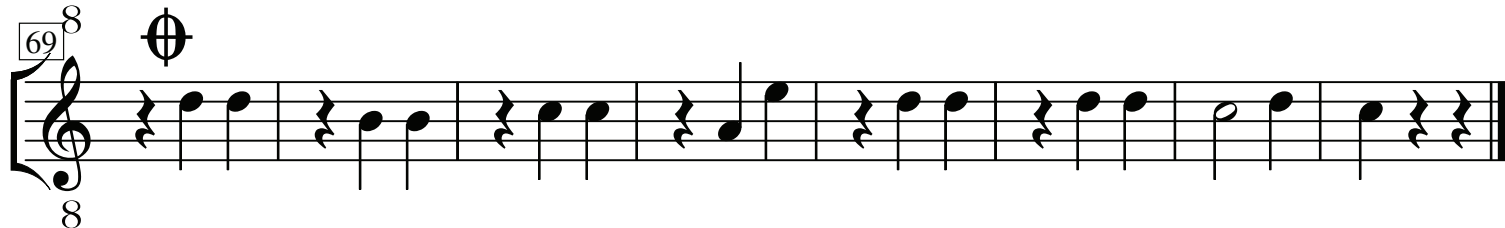
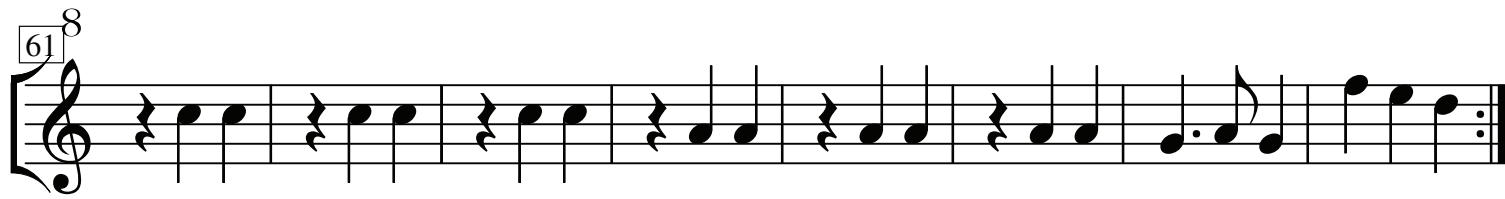
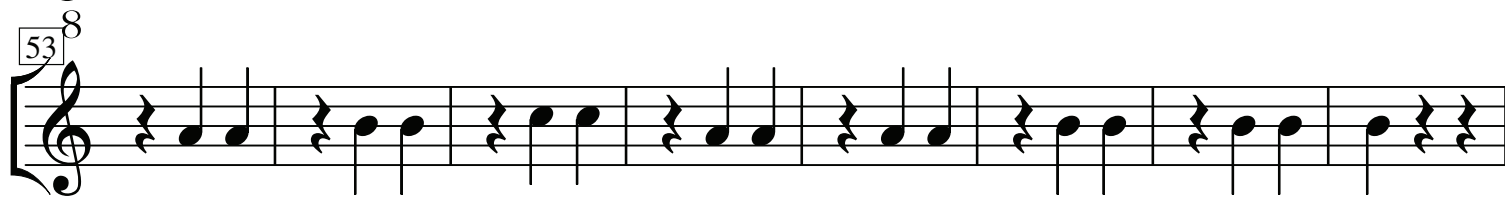
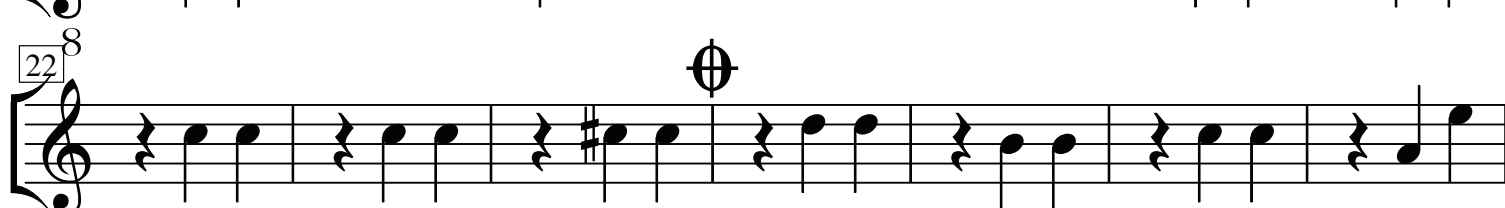
# Kornblumenblau à5

Alto I



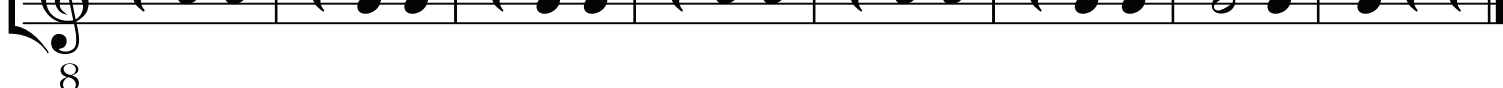
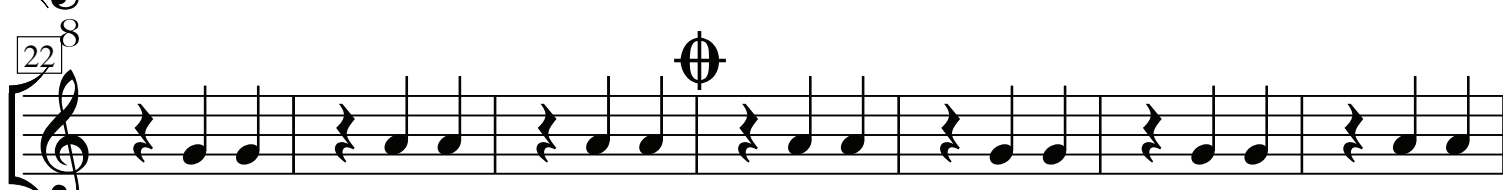
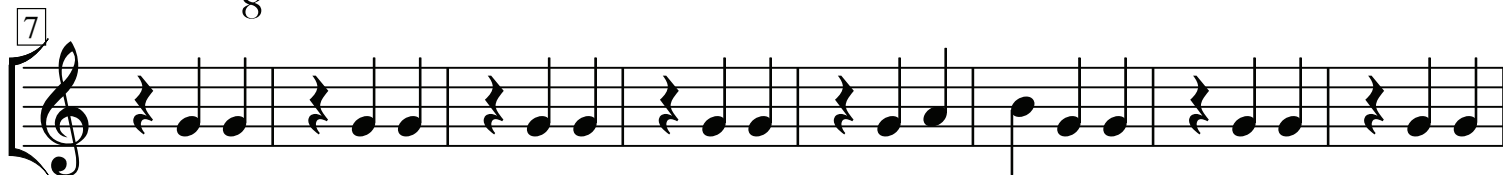
# Kornblumenblau à5

Alto II



# Kornblumenblau à5

Tenor

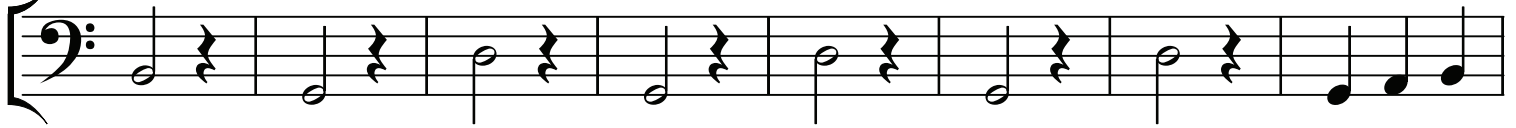


# Kornblumenblau à5

# Basso



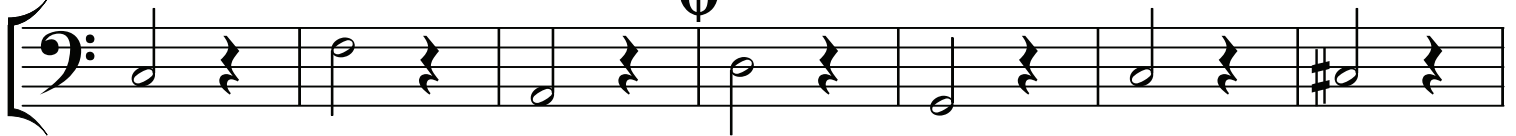
7



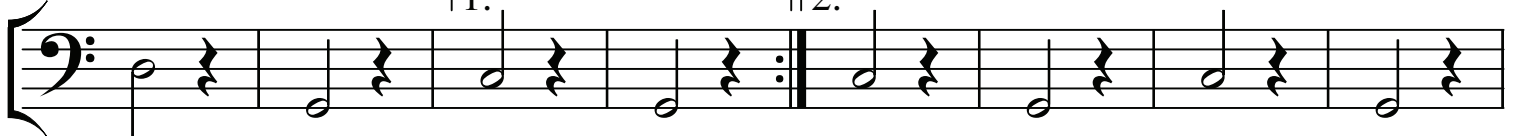
15



22



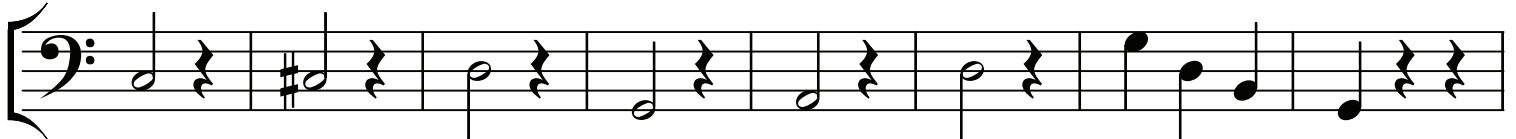
29



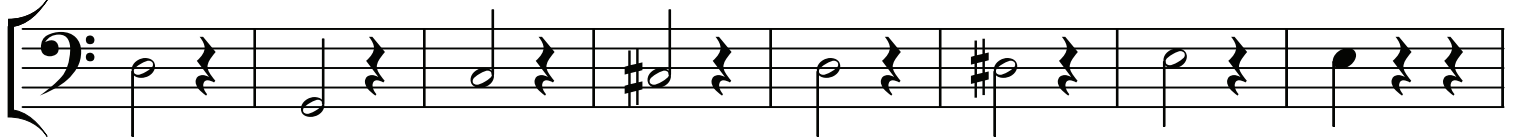
37



45



53



61



69

